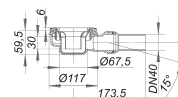
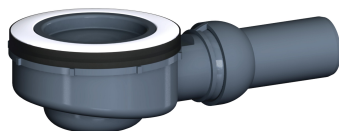


## shower trap body ORIO 60, DN 40

Part number: 160355  
 GTIN: 4001636160355  
 Rebate group: 1



### Description:

shower trap body ORIO 60, DN 40  
 extremely low build-in height (60 mm), for shower trays with a 90 mm outlet

#### specification

- outlet DN 40 horizontal, with ball-joint, adjustable 0 – 15 degrees
- trap insert, removable for cleaning, 40 mm water seal (deviating to DIN EN 1253)
- temporary blanking plate/installation key

#### material

polypropylene

The outlet connector can be supplied in ABS to suit British Standard sizes and PE-HD conforming to DIN EN 1519. Please enquire.

### Flow rates tested to DIN EN 274:

| Nominal diameter | Product standard | Min. flow rate according to norm | Water level according to norm |
|------------------|------------------|----------------------------------|-------------------------------|
| DN 40            | DIN EN 274       | 0.40 l/s                         | 15.00 mm                      |

### Spare parts:

160690 trap insert ORIO 60