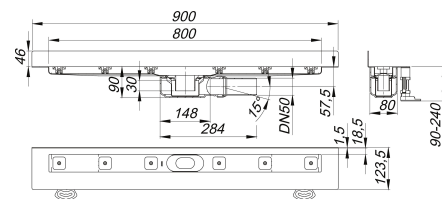
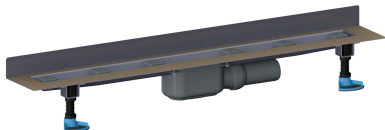


## shower channel CeraLine Plan W 800 mm, DN 50

Part number: 523143  
 GTIN: 4001636523143  
 Rebate group: 8



### Description:

shower channel CeraLine Plan W 800 mm, DN 50  
 Linear drainage for installation at wall  
 with one drain body, outlet DN 50 horizontal, ball-joint adjustable 0 – 15 degrees

#### specification

- sound absorbing height adjustable levelling legs
- integral sand coated flange for secure bonding of under-tile waterproofing
- removable trap insert, 30 mm water seal (deviating to DIN EN 1253)
- height adjustable screws,
- temporary blanking plate
- tiling gauges
- edge trim jigs

#### material

channel 304 stainless steel, trap polypropylene

#### Options for CeraLine Plan W:

- Any made-to-measure length up to 1200 mm can be supplied. Please enquire!
- Upstands can be on back, back and one end or back and both ends
- Upstand can be set back for stone, marble wall finish

Please enquire!

CeraLine 600 mm – 1100 mm can be used with the Poresta® BFR 75 unit!

The outlet connector can be supplied in ABS to suit British Standard sizes and PE-HD conforming to DIN EN 1519. Please enquire.

### Flow rates tested to DIN EN 1253:

Nominal diameter	Product standard	Min. flow rate according to norm	Water level according to norm
DN 50	DIN EN 1253	0.80 l/s	20.00 mm

11.12.2023 11:37

# DALLMER

Spare parts:

523983 adjustable pedestals