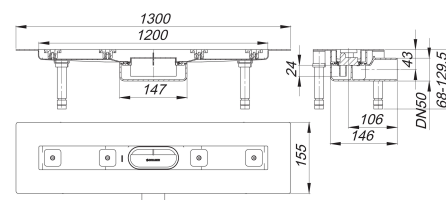
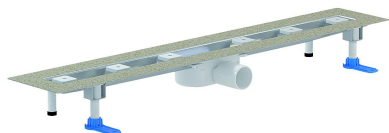


shower channel CeraLine Nano F 1200 mm, DN 50

Part number: 523792

GTIN: 4001636523792

Rebate group: 8



Description:

shower channel CeraLine Nano F 1200 mm, DN 50

Linear drainage

with one drain body, outlet DN 50 horizontal

specification

- sound absorbing height adjustable levelling legs
- integral sand coated flange for secure bonding of under-tile waterproofing
- removable trap insert, 24 mm water seal (deviating to DIN EN 1253)
- height adjustable screws
- temporary blanking plate
- tiling gauges
- edge trim jigs

material

channel 304 stainless steel, trap polypropylene

Options for CeraLine Nano F:

Any made-to-measure length up to 1200 mm can be supplied. Please enquire!

CeraLine 600 mm – 1100 mm can be used with the Poresta® BFR 75 unit!

CeraLine 500 mm – 1100 mm can be used with the Schedel-Element LINE Dallmer UNIVERSAL!

The outlet connector can be supplied in ABS to suit British Standard sizes and PE-HD conforming to DIN EN 1519. Please enquire.

Flow rates tested to DIN EN 1253:

Nominal diameter	Product standard	Min. flow rate according to norm	Water level according to norm
DN 50	DIN EN 1253	0.80 l/s	20.00 mm

11.12.2023 20:25

DALLMER

Spare parts:

523983 adjustable pedestals