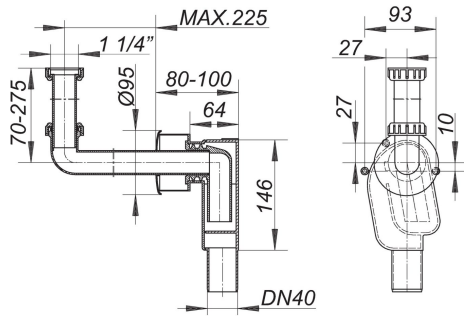


08. July 2020

concealed trap type 300 KS, 1 1/4" x DN 40

Product No. 130235
EAN: 4001636130235
Discount group: 1



conforming to DIN 19541

- specification:
- space saving built-in trap body
 - height adjustable inlet
 - escutcheon
 - removable trap insert

material:
trap in polypropylene

inlet white polypropylene, escutcheon white ABS

| Product No. | Description | Dimensions |
|-------------|---------------------------------------|----------------|
| 140333 | elbow types 320 PC CR, 1 1/4" x DN 32 | 1 1/4" x DN 32 |
| 143020 | trap insert for 300, 310 | |