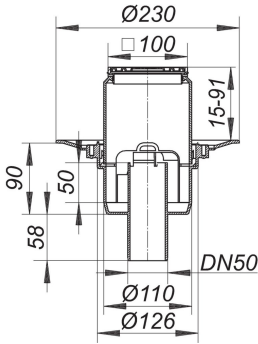


06. November 2020

floor drain type 40 SE, DN 50, 100 x 100 mm

Product No. 405050
EAN: 4001636405050
Discount group: 3



conforming to DIN EN 1253
outlet DN 50 vertical

specification
– height adjustable grating E 10
– removable trap insert, 50 mm water seal (conforming to DIN EN 1253)
– temporary blanking plate

material
polypropylene
frame ABS, 100 x 100 mm, grate 304 stainless steel, load class K 3 (300 kg)

The outlet connector can be supplied in ABS to suit British Standard sizes and PE-HD conforming to DIN EN 1519. Please enquire.

Flow rate tested to DIN EN 1253
(with 20 mm water over grate)

	Norm	DALLMER
DN 50	0.8 l/s	1.34 l/s

Product No.	Description	Dimensions
590275	Bell trap for floor drain body type 40	
405128	Floor drain body type 40 S, DN 50	DN 50
495204	frame EN 10, 100 x 100 mm	100 x 100 mm

06. November 2020

DALLMER

501011	grate E 90, 90 x 90 mm	90 x 90 mm
--------	------------------------	------------

Product No.	Description	Dimensions
495020	Back flow seal S 10, d: 110 mm	d: 110 mm
839503	clamp ring S 10	
515025	fire and sound-insulating collar - installation kit 2, DN 50	DN 50
831569	raising piece type 85	
832566	raising piece type 85 DallBit	
495075	Two-way seal CeraDrain type S 10	
790323	waterproofing collar S 10, EPDM, d: 420 mm	d: 420 mm
790316	waterproofing collar S 10, flexible PVC, d: 420 mm	d: 420 mm