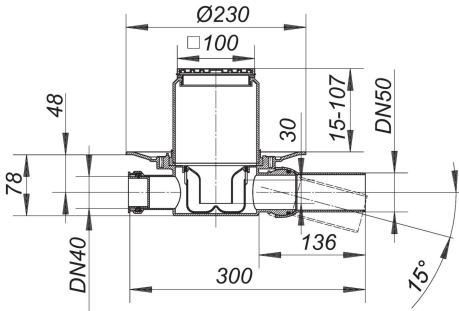


06. November 2020

floor drain type 42 SE, inlet DN 40, DN 50, 100 x 100 mm

Product No. 420121
EAN: 4001636420121
Discount group: 3



outlet DN 50 horizontal, with ball-joint, adjustable 0 - 15 degrees

- specification
- side inlet DN 40
 - height adjustable grating type E 10
 - removable trap insert, 30 mm water seal (deviating to DIN EN 1253)
 - temporary blanking plate

material
polypropylene
frame ABS, 100 x 100 mm, grate 304 stainless steel, load class K 3 (300 kg)

The outlet connector can be supplied in ABS to suit British Standard sizes and PE-HD conforming to DIN EN 1519. Please enquire.

Flow rate tested to DIN EN 1253 Tab. 3,
(with 20 mm water over cover plate), conforming to DIN EN 274

	Norm	DALLMER
DN 50	0.4 l/s	0.62 l/s

Product No.	Description	Dimensions
420022	Floor drain body type 42 S, inlet DN 40, DN 50	DN 50
495204	frame EN 10, 100 x 100 mm	100 x 100 mm
501011	grate E 90, 90 x 90 mm	90 x 90 mm

06. November 2020

DALLMER

495044	Trap insert for floor drain body type 42
--------	--

Product No.	Description	Dimensions
495020	Back flow seal S 10, d: 110 mm	d: 110 mm
839503	clamp ring S 10	
831569	raising piece type 85	
832566	raising piece type 85 DallBit	
495075	Two-way seal CeraDrain type S 10	
790323	waterproofing collar S 10, EPDM, d: 420 mm	d: 420 mm
790316	waterproofing collar S 10, flexible PVC, d: 420 mm	d: 420 mm