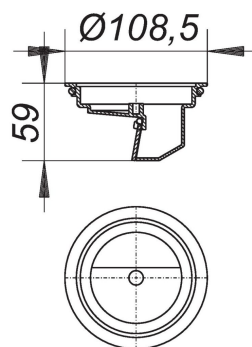


06. November 2020

DALLMER**self-closing flap-valve S 10/12, d: 108,5 mm**

Product No. **495846**
 EAN: 4001636495846
 Discount group: 3



for use with floor drain PRONTO in place of trap insert (except for PRONTO K Alu), gratings and frames series 10 with 120 x 120 mm or with d: 120 mm, and for frames type SES 10/ECS 12.

Used on combined foul and rainwater systems, the flap-valve allows water to drain whilst preventing the escape of foul air and foam.

With no water seal, it cannot freeze!

specification
 – self-closing flap

material
 ABS

| Product No. | Description | Dimensions |
|-------------|--|----------------------|
| 700339 | floor drain PRONTO K Alu, DN 100, 120 x 120 mm | DN 100, 120 x 120 mm |
| 700360 | floor drain PRONTO K, DN 100, 120 x 120 mm | DN 100, 120 x 120 mm |
| 700384 | floor drain PRONTO K, DN 125, 120 x 120 mm | DN 125, 120 x 120 mm |
| 700391 | floor drain PRONTO K, secured, DN 100, 120 x 120 mm | DN 100, 120 x 120 mm |
| 700063 | floor drain PRONTO, DN 100, 120 x 120 mm | DN 100, 120 x 120 mm |
| 700087 | floor drain PRONTO, DN 125, 120 x 120 mm | DN 125, 120 x 120 mm |
| 495341 | frame ECS 12, 304 stainless steel, 120 x 120 mm | 120 x 120 mm |
| 495334 | frame ER 12, 304 stainless steel, d: 120 mm | d: 120 mm |
| 495259 | frame SES 10, 150 x 150 mm | 150 x 150 mm |
| 495426 | frame V, S 10/120, 304 stainless steel, 120 x 120 mm | 120 x 120 mm |

06. November 2020

DALLMER

| | | |
|--------|---|--------------|
| 495419 | Frame V, S 15/120, 120 x 120 mm | |
| 495433 | Frame V, S 15/d: 120 mm | d: 120 mm |
| 510198 | grating DER S 10/120, 120 x 120 mm | |
| 510310 | grating E 12, 120 x 120 mm | 120 x 120 mm |
| 510327 | grating EN 12, secured grate, 120 x 120 mm | 120 x 120 mm |
| 510334 | grating ER 12, d: 120 mm | d: 120 mm |
| 510365 | grating Quadra S 10/120, 120 x 120 mm | |
| 510105 | grating SEC 10, 150 x 150 mm | 150 x 150 mm |
| 510136 | grating SEN 10, secured grate, 150 x 150 mm | 150 x 150 mm |