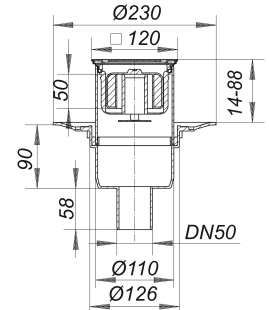


## floor drain type 30 PRIMUS E 12, DN 50, 120 x 120 mm

Part number: 405333  
 GTIN: 4001636405333  
 Rebate group: 3



### Description:

floor drain type 30 PRIMUS E 12, DN 50, 120 x 120 mm  
 Seals when water dries out!  
 outlet DN 50 vertical

#### specification

- 50 mm bell trap and mechanically sealing device
- height adjustable grating E 12
- temporary blanking plate

#### material

polypropylene  
 frame 304 stainless steel, 120 x 120 mm, grate 304 stainless steel, load class K 3 (300 kg)

The outlet connector can be supplied in ABS to suit British Standard sizes and PE-HD conforming to DIN EN 1519. Please enquire.

Fire protection system 2 (Part No. 515025) applicable.

### Flow rates tested to DIN EN 1253:

| Nominal diameter | Product standard | Min. flow rate according to norm | Water level according to norm |
|------------------|------------------|----------------------------------|-------------------------------|
| DN 50            | DIN EN 1253      | 0.80 l/s                         | 20.00 mm                      |

### Spare parts:

495006 trap insert Primus, 50 mm, for frames 1