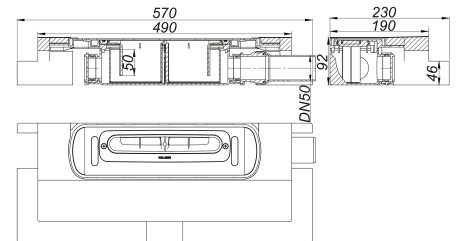
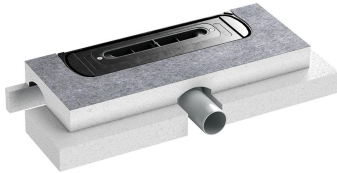


Drain body DallFlex EPS assembled, DN 50

Part number: 539304
 GTIN: 4001636539304
 Rebate group: 11



Description:

Drain body DallFlex EPS assembled, DN 50
 conforming to DIN EN 1253

for installation with shower channels CeraFloor, CeraWall, CeraFrame, Zentrix and CeraNiveau.

Outlet DN 50 horizontal, can be positioned on three sides without tools, with ball-joint, adjustable 0 – 15 degrees

specification

- EPS factory assembled housing for easy adjustment and fixing with tile adhesive
- flexible sealing collar for secure bonding of under-tile waterproofing
- accessories for sound insulated installation
- sound absorbing and height adjustable levelling legs
- removable trap insert, 50 mm water seal (conforming to DIN EN 1253)
- temporary blanking plate

Material

Drain body and outlet polypropylene, highly impact-resistant; housing expanded polystyrene rigid foam (EPS)

Flow rates tested to DIN EN 1253:

Nominal diameter	Product standard	Min. flow rate according to norm	Water level according to norm	Flow rate at water level 20 mm
DN 50	DIN EN 1253	0.80 l/s	20.00 mm	0.80 l/s

Spare parts:

535504 trap insert DallFlex

540249 sound-insulating shower underlay DallFI

540256 sound-insulating shower underlay DallFI

540263 sound-insulating shower underlay DallFI

540270 sound-insulating shower underlay DallFI

540287 sound-insulating shower underlay DallFI

540294 sound-insulating shower underlay DallFI

540300 sound-insulating shower underlay DallFI

540317 sound-insulating shower underlay DallFI

540324 sound-insulating shower underlay DallFI

540331 sound-insulating shower underlay DallFI

540348 sound-insulating shower underlay DallFI

540355 sound-insulating shower underlay DallFI